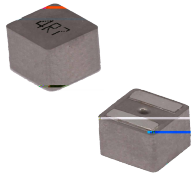




MDTA Series

Flat Wire Molded Inductor

Size 1510



FEATURES

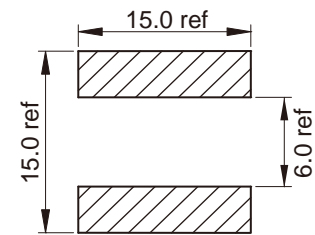
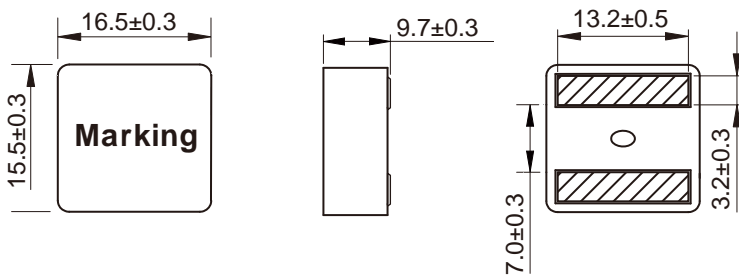
- Flat wire coil for low copper losses
- #
- †
- High current capability
- AE# j
- \ C @
- j

APPLICATION

-) #) # Noise suppressor for motor wipers / power seats/
- Q) ers

Dimensions: [mm]

Land Pattern: [mm]



Electrical Properties:

Part No	L@100KHz /0.1V	Tolerance	I _{SAT} Typ.	I _R		R _{DC} Max.
				20°C rise	40°C rise	
U) u° k U		±20%				
U) u° k U		±20%				
U) u° k U		±20%				
U) u° k U		±20%				
U) u° U		±20%				
U) u° U		±20%				
U) u° U	22	±20%				
U) u° U		±20%				

Saturation Current will cause L to drop approximately 30%
 Temperature Rise Current that causes the specified temperature rise from 25°C ambient.



Reel Dimension: [mm]



Packaging Quantity: